

Lombardore : Industriale



351 | : 4 | : 4 | : 10

---> **Codice** <---: PER 111273

---> **Tipologia** <---:

---> **Provincia** <---: Torino

---> **frazione** <---: Industriale

---> **Totale_mq** <---: 351

---> **bagni** <---: 4

: 2

:

---> **Motivazione** <---:

: Piemonte

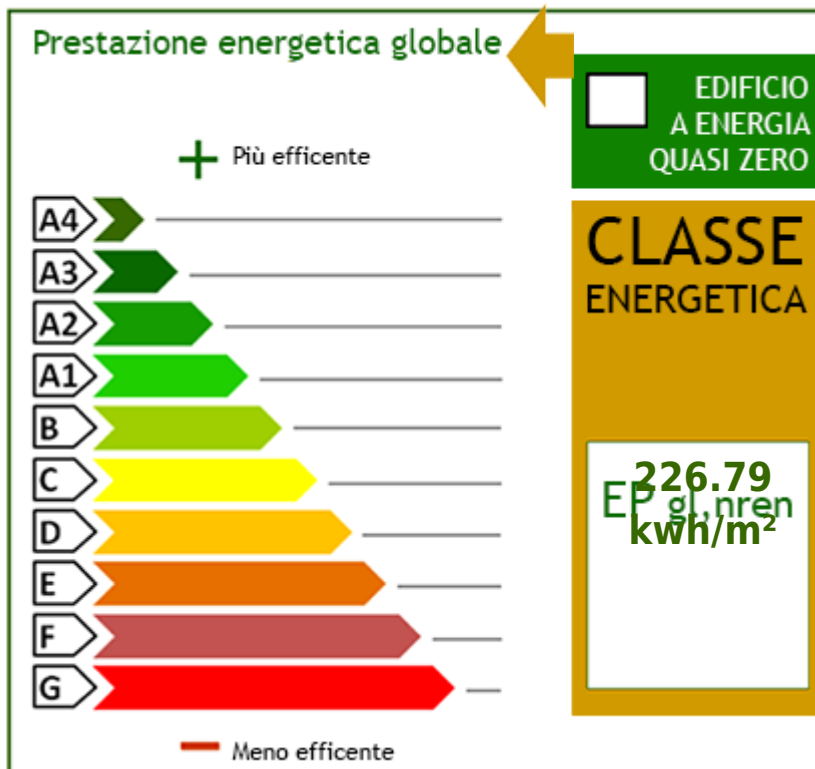
---> **Comune** <---: Lombardore

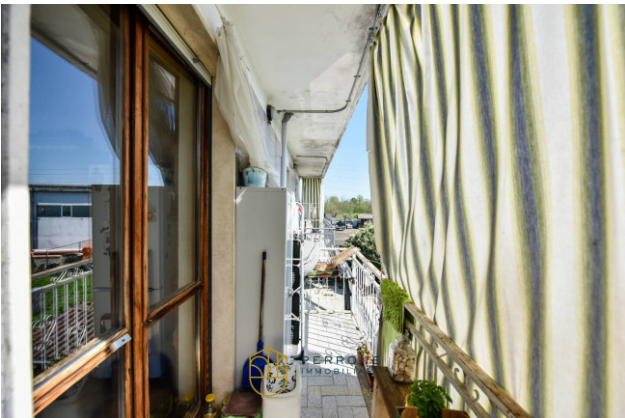
---> **Prezzo_Richiesto** <---: € 198.000

---> **camere** <---: 4

---> **Locali** <---: 10

: 1980





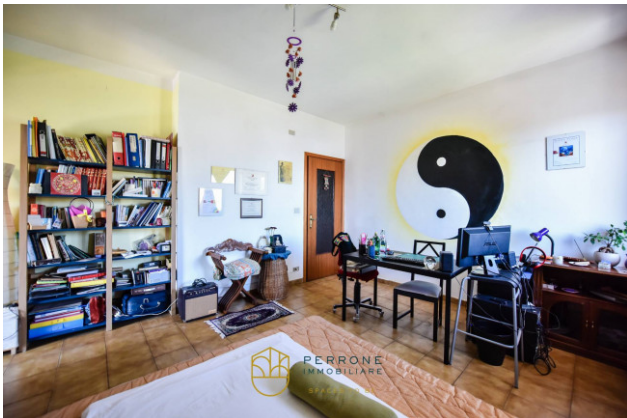




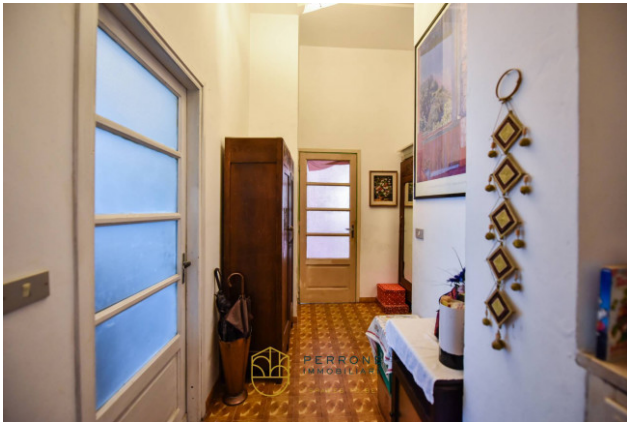


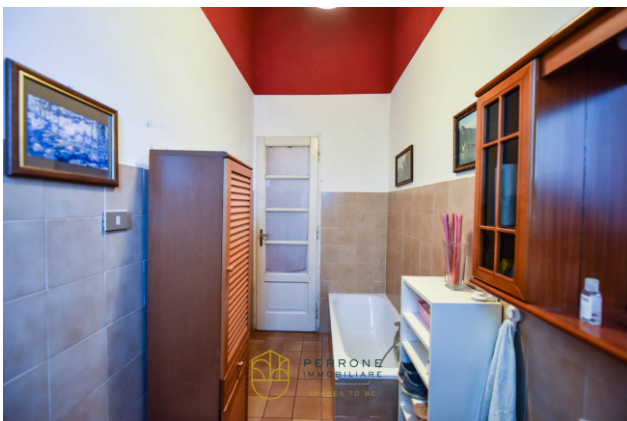
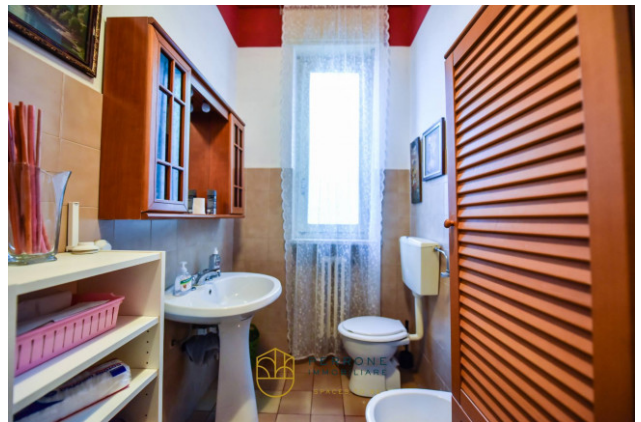


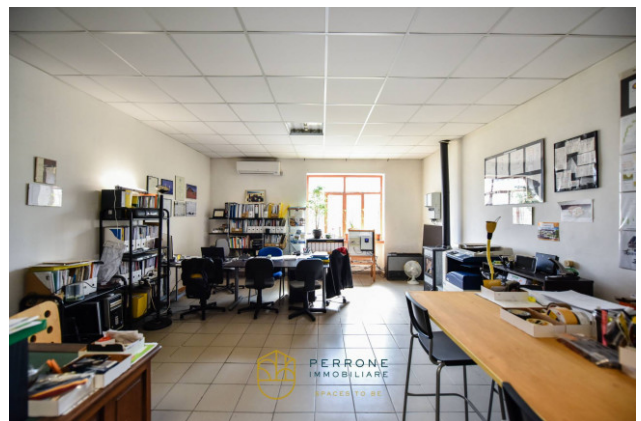
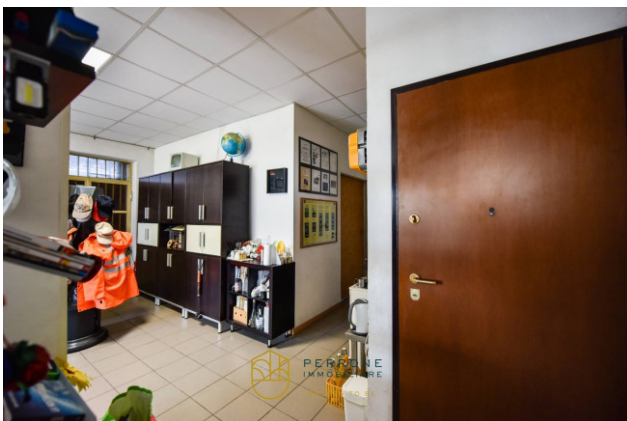
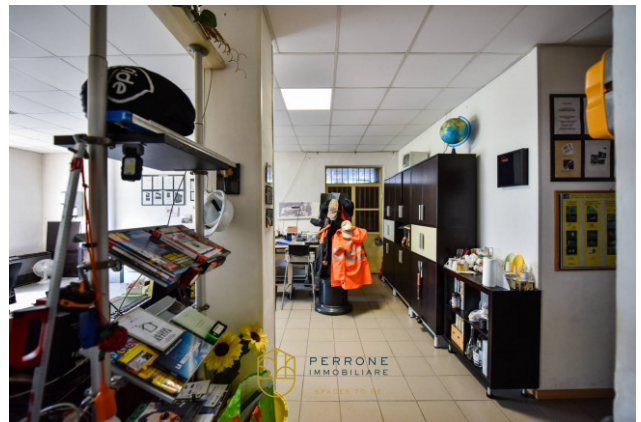


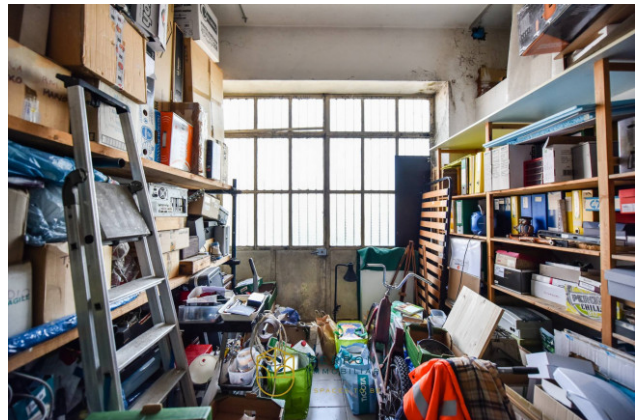
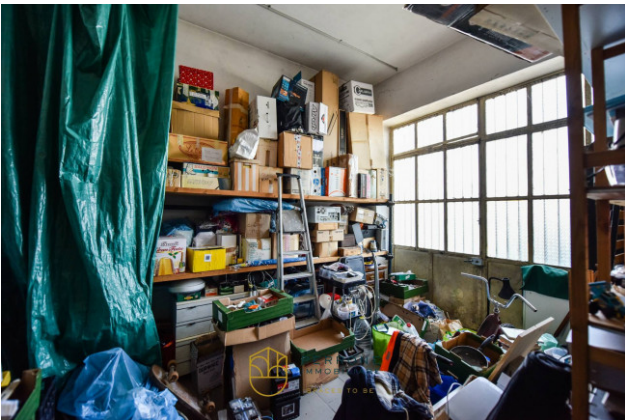




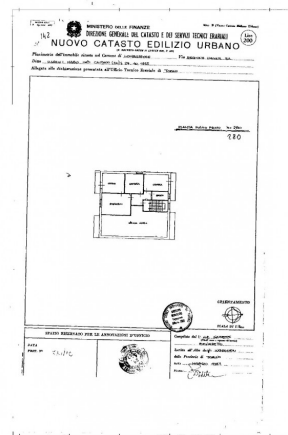
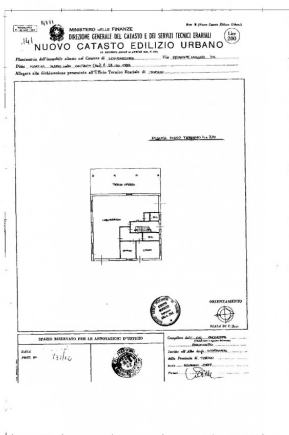






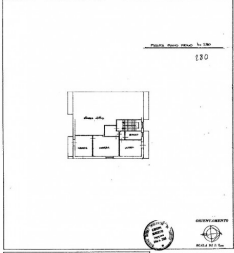






Ministero delle Infrastrutture e dei Trasporti
 DIREZIONE GENERALE DEI CANTIERI E DEI SERVIZI TECNICI EDILIZI
NUOVO CATASTO EDILIZIO URBANO

Piano di attuazione del progetto di urbanizzazione n. 120
 Foglio n. 120



SEDE PRELIMINARE PER LE ANNOTAZIONI E I RITARDI
 Data: 12/12/2012
 Firma: [Firma]